

September 20, 2021

Press Release

JMI organises lecture on “Space/Subject: Vernaculars of Endurance in Delhi’s Slums and Streets” by Cambridge University’s Prof. Ash Amin

The Department of English, Jamia Millia Islamia(JMI), organized the seventh lecture of the Distinguished Lecture Series, “Space/Subject: Vernaculars of Endurance in Delhi’s Slums and Streets” by Prof. Ash Amin, Professor of Geography at the University of Cambridge and the Swedish Research Council’s 2021 Olof Palme Visiting Chair at the University of Uppsala, on Friday, 17th September, 2021, 6:30-7:30 PM IST on Zoom. Supported by the Scheme for Promotion of Academic and Research Collaboration (SPARC), Ministry of Education, Government of India, the talk was organized as part of the ongoing academic collaboration with the Department of English and American Studies, University of Würzburg, Germany, and promises to be one in a line of successively pertinent lectures.

The talk was conducted by Ms. Shraddha A. Singh, Ms. Zahra Rizvi, and Ms. Suman Bhagchandani, Ph.D. scholars, Department of English, JMI, and was enthusiastically attended by a large crowd of scholars, students, and faculty from all over the world and across various time-zones.

Prof. Simi Malhotra, H.o.D., Department of English, JMI, Indian PI, delivered the welcome address, greeting the invited speaker, faculty, scholars, and students. She spoke about the talk as a part of the ongoing collaborative project between the Department of English, Jamia Millia Islamia and the Department of English and American Studies, University of Würzburg, on “New Terrains of Consciousness: Globalization, Sensory Environments and Local Cultures of Knowledge”, supported by the Ministry of Education’s initiative SPARC, “Scheme for Promotion of Academic and Research Collaboration” which aims to facilitate academic and research collaboration between higher education institutes in India and abroad. She, then, introduced the esteemed speaker, Prof. Ash Amin, who was greeted by a round of applause.

Prof. Amin's lecture focused on the reciprocity of body and space in the making of the mind through a study of slums and streets in the city of Delhi, such as Kusumpur Pahari, Yamuna Pushta, and more. Through many an interlocuter, Prof. Amin drew connections between mental well-being and dwelling practices of the inhabitants of these spaces and focusses on what he calls the 'vernaculars of endurance' which are woven into multiple facets of living such as infrastructural and neighbourhood familiarity, sociality of kinds and fictions of community. Through his lecture, Prof. Amin also emphasized on the significance of the care industry in providing training opportunities, medical facilities, and other supportive infrastructure for the inhabitants of these spaces.

This was followed by an engaging, in-depth Q/A session coordinated by Ms. Ann Susan Aleyas, Ph.D. Scholar, Department of English, JMI. The event was brought to an end with a Vote of Thanks by Ms. Sakshi Dogra.

To ensure a wide range of viewership and participation, the event was also live streamed on YouTube, and was attended by over a hundred participants.

Public Relations Office
Jamia Millia Islamia

Affliction, Space, Embodied Mind

Thinking with:

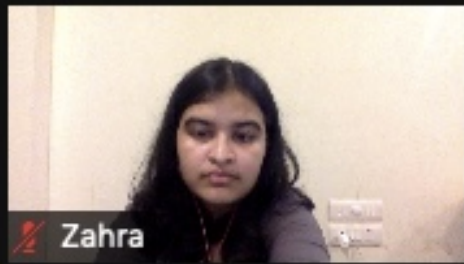
- Vernaculars of affliction (Veena Das)
- Spatial materiality (Joao Biehl, Filip de Boeck, Brighupathi Singh, Michele Lancione)
- Indian slum studies by Pushpa Arabindoo, Amrita Bhaviskar, Ayona Datta, Asher Gertner, Nikhil Anand, Colin McFarlane, Ravi Sundaram, Abdoumalig Simone
- Embodied brain (Rose and Fitzgerald) and corporeal space (Hester Parr, Ola Soderstrom, Cameron Duff, David Bisset)







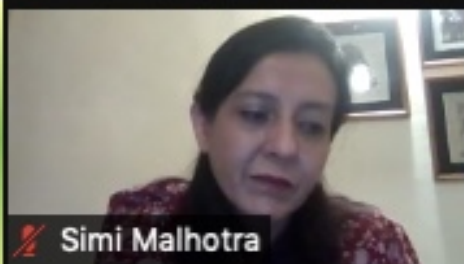
🔴 Suman Bhagchandani



🔴 Zahra



Ash Amin



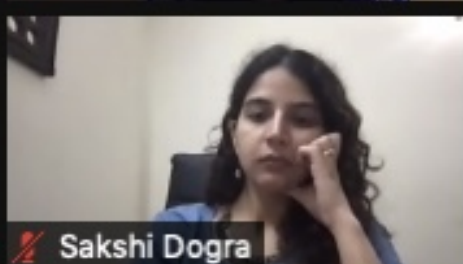
🔴 Simi Malhotra



🔴 Shraddha A. Singh



🔴 Zahid Zamri



🔴 Sakshi Dogra



🔴 Ann Susan Aleyas

